



GAT MONTHLY MEMBERSHIP PROGRESS REPORT

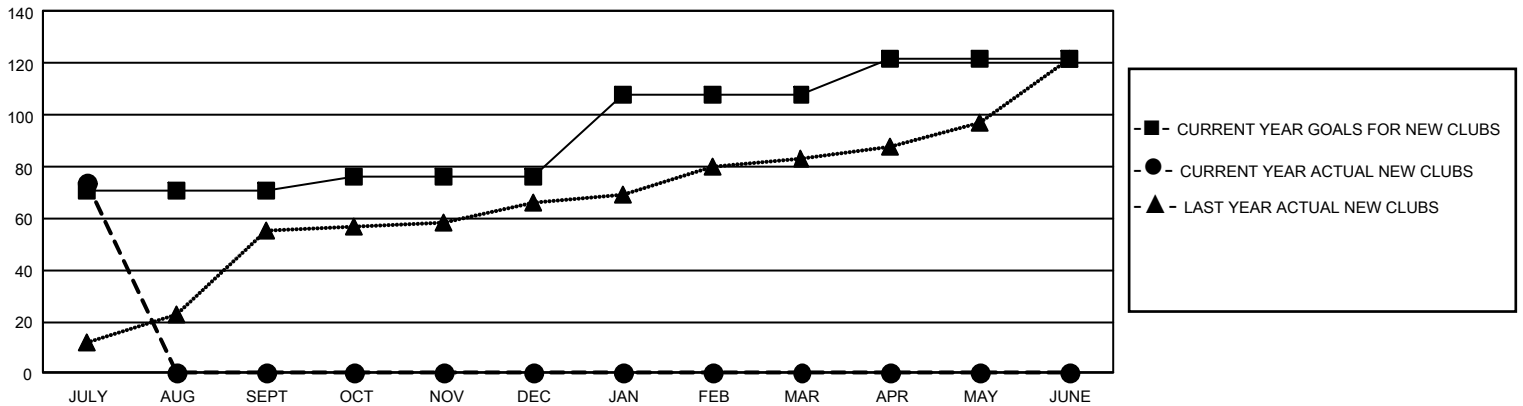
Results as of: 7/31/2025

GMT Constitutional Area 6 - I, Group G

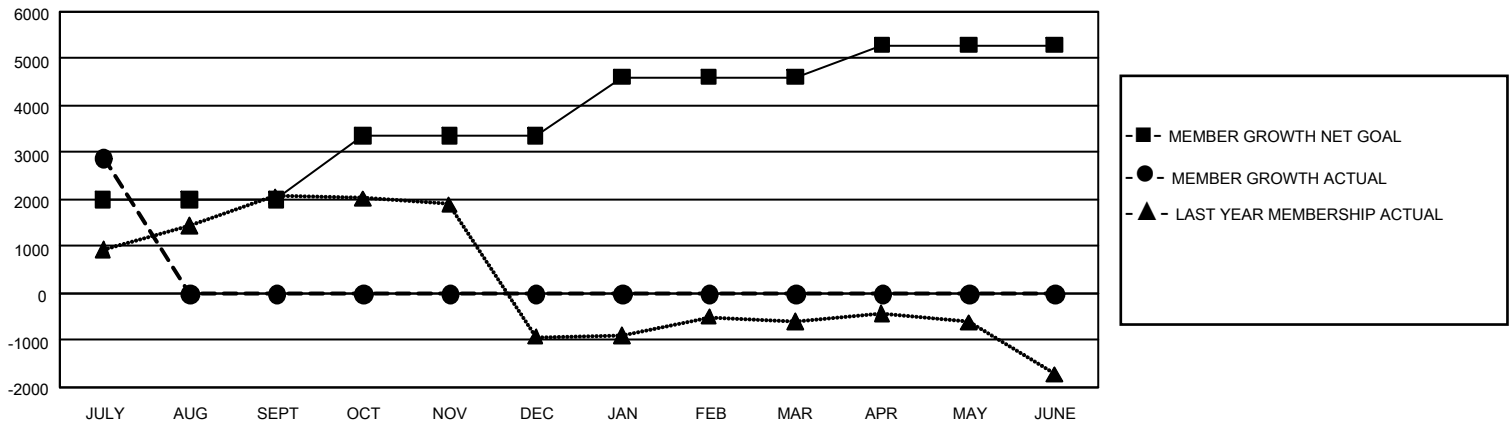
REPORT DOES NOT INCLUDE CLUBS IN UNDISTRICTED AREAS.

Clubs				Members			
RESULTS FOR 2025-2026				RESULTS FOR 2025-2026			
QUARTER	NEW CLUB GOAL	NEW CLUBS	DROPPED CLUBS	QUARTER	MEMBER GROWTH NET GOAL	MEMBER GROWTH ACTUAL	DROPPED MEMBERS ACTUAL (including transfers)
JULY/AUG/SEPT	213	74	1	JULY/AUG/SEPT	1990	3,428	351
OCT/NOV/DEC	15	0	0	OCT/NOV/DEC	1370	0	0
JAN/FEB/MAR	96	0	0	JAN/FEB/MAR	1255	0	0
APR/MAY/JUNE	42	0	0	APR/MAY/JUNE	675	0	0

GOALS AND ACTUAL NEW CLUBS CUMULATIVE



GOALS AND ACTUAL MEMBERS CUMULATIVE



DROPPED CLUBS: 1

479 CLUBS OF 1,180 ADDED 1 OR MORE NEW MEMBERS

GENDER DISTRIBUTION

MALE	28,344 (67.97%)
FEMALE	13,352 (32.02%)
NON BINARY	1 (0.00%)
PREFER NOT TO ANSWER	4 (0.01%)

DROPPED MEMBERS

DECEASED	8
CLUB CANCELLED	0
OTHER	336
TOTAL	344

[CLICK HERE FOR CUMULATIVE MEMBERSHIP DATA](#)

TOTAL FAMILY UNIT MEMBERS	17,775
FAMILY MEMBERS PAYING HALF DUES	10,524